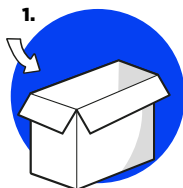
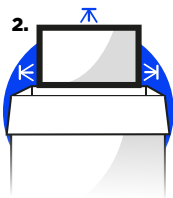


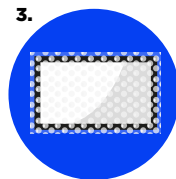
Returning a large item correctly



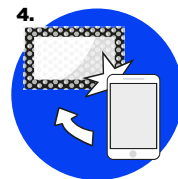
Use the **original** packaging or a **double walled** box



Make sure there is **sufficient** room between the goods and the box



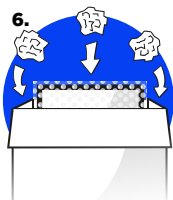
Secure the corners and edge of the goods against transport damage with **bubble wrap**



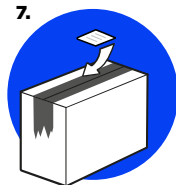
Take a picture of the **packaged** goods



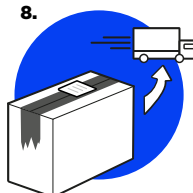
Email the photo to **info@visunext.co.uk**. This allows us to process any transport damage more efficiently



Place the goods in the empty box and fill the **empty spaces** with newspaper or similar



Seal the box tightly with **packing tape** and attach the shipping label so that its **clearly visible**



Sent the goods with the **courier**